

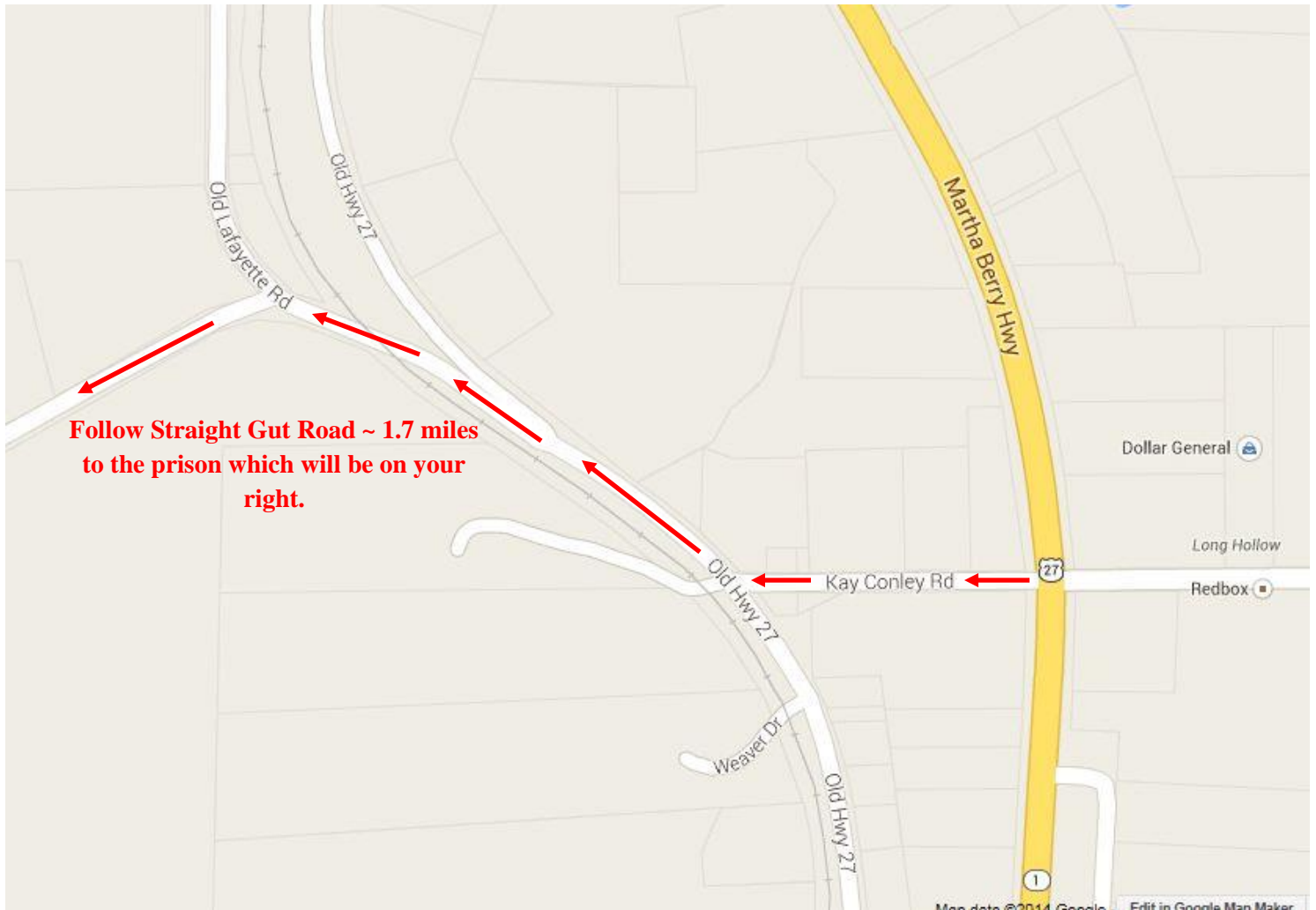
# Your First Visit to Walker State Prison for a Mentoring Session

For your GPS devices or smart phones, the physical address for Walker State Prison is;

**97 Kevin Lane**

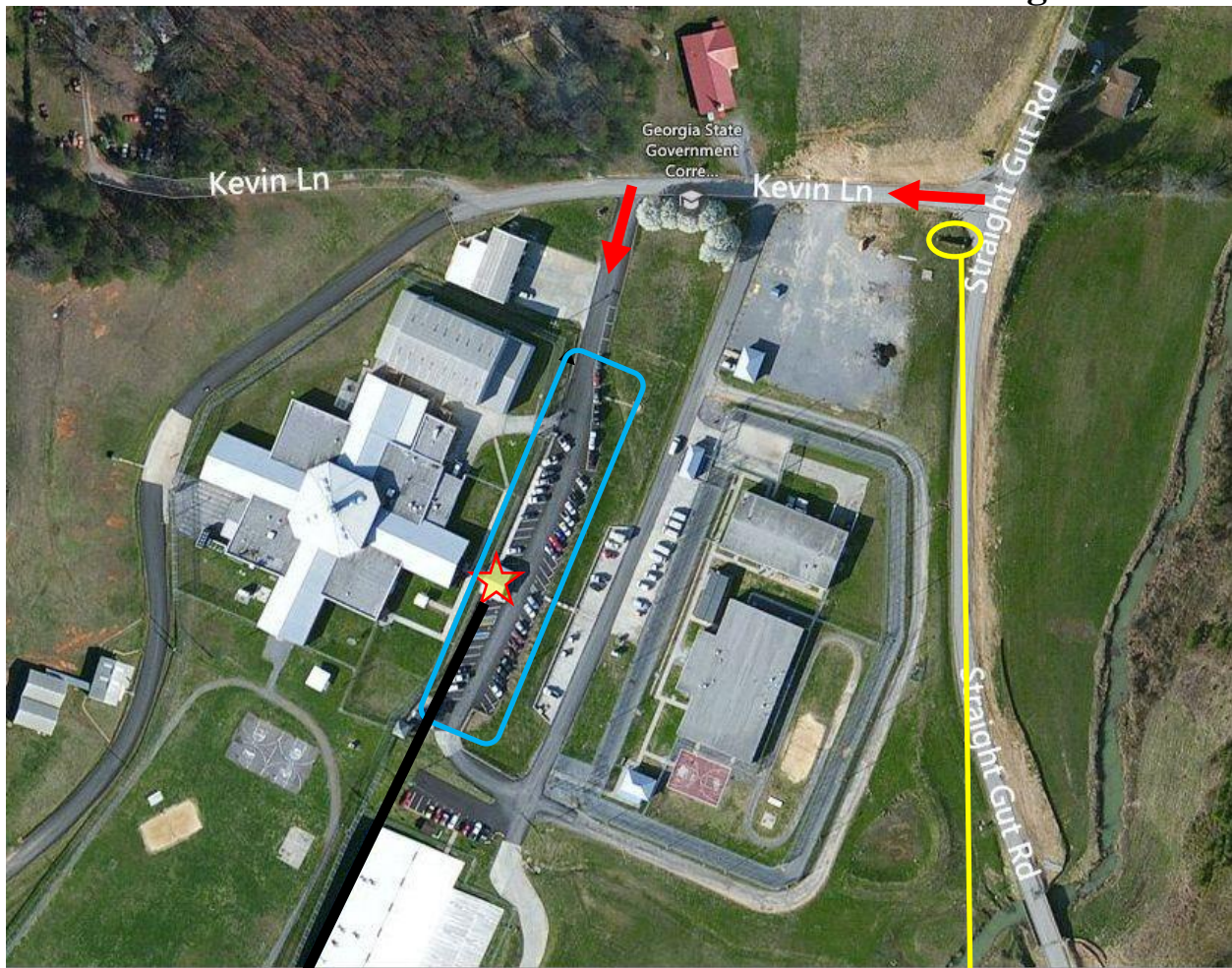
**Rock Spring, GA 30739**

Since you may be coming from many different locations, this will just address the “tricky” part of navigating to the prison. See map below. In Rock Spring, GA, at the intersection of Hwy# 27 (Martha Berry Hwy) and Kay Conley Road (stop light at this intersection), you will need to turn west onto Kay Conley Road. At the stop sign you will need to turn right onto Old Hwy# 27 and then bear left at the next two forks. This will result in you heading west on Straight Gut Road which will take you to the prison that will be on your right after ~1.7 miles from the first fork.



Please try to arrive approximately 15 minutes before the start of your mentoring session as processing into the prison can sometimes take a little time. We may occasionally experience a delay in getting into the prison so do not be surprised if it takes a period of time before you gain access. Remember, we are guests of the prison and not their number one priority! We serve as witnesses to the prison staff as much as we are witnesses to the prisoners, so always be courteous and have patience.

# Your First Visit to Walker State Prison for a Mentoring Session



**Main Entrance to Prison – “Bunker”**

**Sign at Entrance to Prison**

Turn into the prison at the sign indicated and proceed to the upper parking lot. You may park in any undesignated parking space in the **blue** outlined area. **Lock your vehicle** securely and proceed to the “Bunker” for processing into the prison. Don’t forget **your car license tag number!**

# Your First Visit to Walker State Prison for a Mentoring Session

## Things to Bring:

1. Your Bible
2. A note pad (**no metal** spiral-bound note pads)
3. Pencil or Pen
4. A **government issued photo ID** – your driver’s license will work **IF** it has your photo. **THIS IS A MUST HAVE...Failure to have this will prevent you from entering the prison.**
5. If you drove – **your car keys & your license plate number**

## Things **Not** to Bring (**DO NOT BRING THESE!**):

1. Your billfold & it’s contents – **no** money, credit cards, etc. should be taken into the prison
2. Cell phones – **it is a felony to have a cell phone inside the prison. DON’T! You take one in and you’ll be staying awhile.**
3. House and other keys – **No!**
4. Loose change – **Nope!**
5. Knives, nail clippers, or other potential weapons – **Never!**
6. **NO GUNS!** – even in your parked and locked vehicle. They are **not** allowed on the property.
7. Cameras or video/audio recording devices of any kind – **No!**
8. Chewing gum, mints, candy, etc. are **not** permitted
9. **Bottom line** – *it is best to empty all your pockets and store your personal items away from view in your locked car before you enter the “Bunker.”* The “Bunker” is not equipped to hold any items that you forgot to put in your vehicle, so don’t bring it into the “Bunker.”

## What to Wear:

1. Full length trousers – **NO SHORTS!**
2. No holes or tears can be visible in your pants or shirt.
3. Proper shoes – **NO open-toed shoes or sandals**
4. Avoid tight revealing apparel, hats, scarves, gloves, multiple clothing layers, and heavy coats

**Processing into the Prison:** Upon entering the “Bunker” you will provide the corrections officer behind the glass wall with your **photo ID** and **car keys (if you drove)**. These will be kept until you exit the prison. You will then request a “**Visitor’s Badge**” from them; pin this to your shirt or collar where it is easily seen and keep it on you at all times. You will **sign in on the roster**, noting that you are a volunteer to see the chaplain. If you drove, you will need to record the **license plate number** of your vehicle. You will finally process through a metal detector while all carry-in materials will be searched and/or X-rayed. Should you alarm the metal detector, you may be asked to remove your shoes for X-ray and/or your belt. It is sometimes surprising how many shoes now have steel shanks that will set-off metal detectors. If you have a medical condition (knee or hip replacement) that is known to set-off a metal detector, please bring a document from your doctor stating such.

The number of people in the “Bunker” is limited to nine (9), including any corrections officers, therefore be prepared to leave the “Bunker” and wait outside if the number of people exceeds this limit. You may be asked to leave the “Bunker” for other reasons, so please follow all directions given by the corrections officers.

**Emergency Contact Number:** Should you need to be reached *in an emergency* during your session, someone can contact you by calling **(706) 764-3600** and asking for the shift supervisor.